



Friday, 19 November 2021

Governance, Audit and Standards Committee
Monday, 29 November 2021

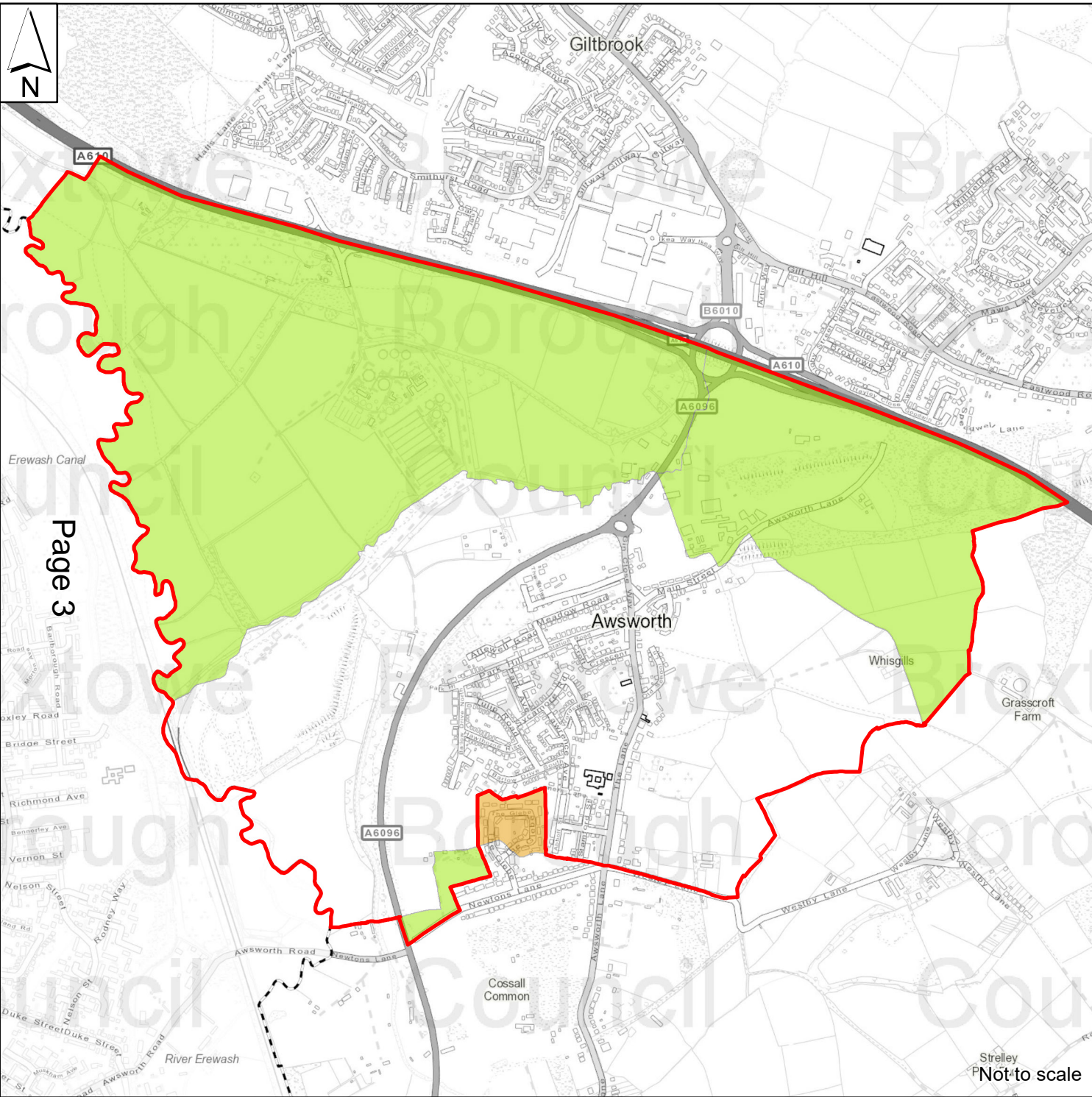
SUPPLEMENT 1

Please find enclosed the documents for consideration in relation to Item 4, Community Governance Review, on the main agenda.

Maps for Item 4

(Pages 3 - 12)

This page is intentionally left blank



Awsworth

Draft Recommendations

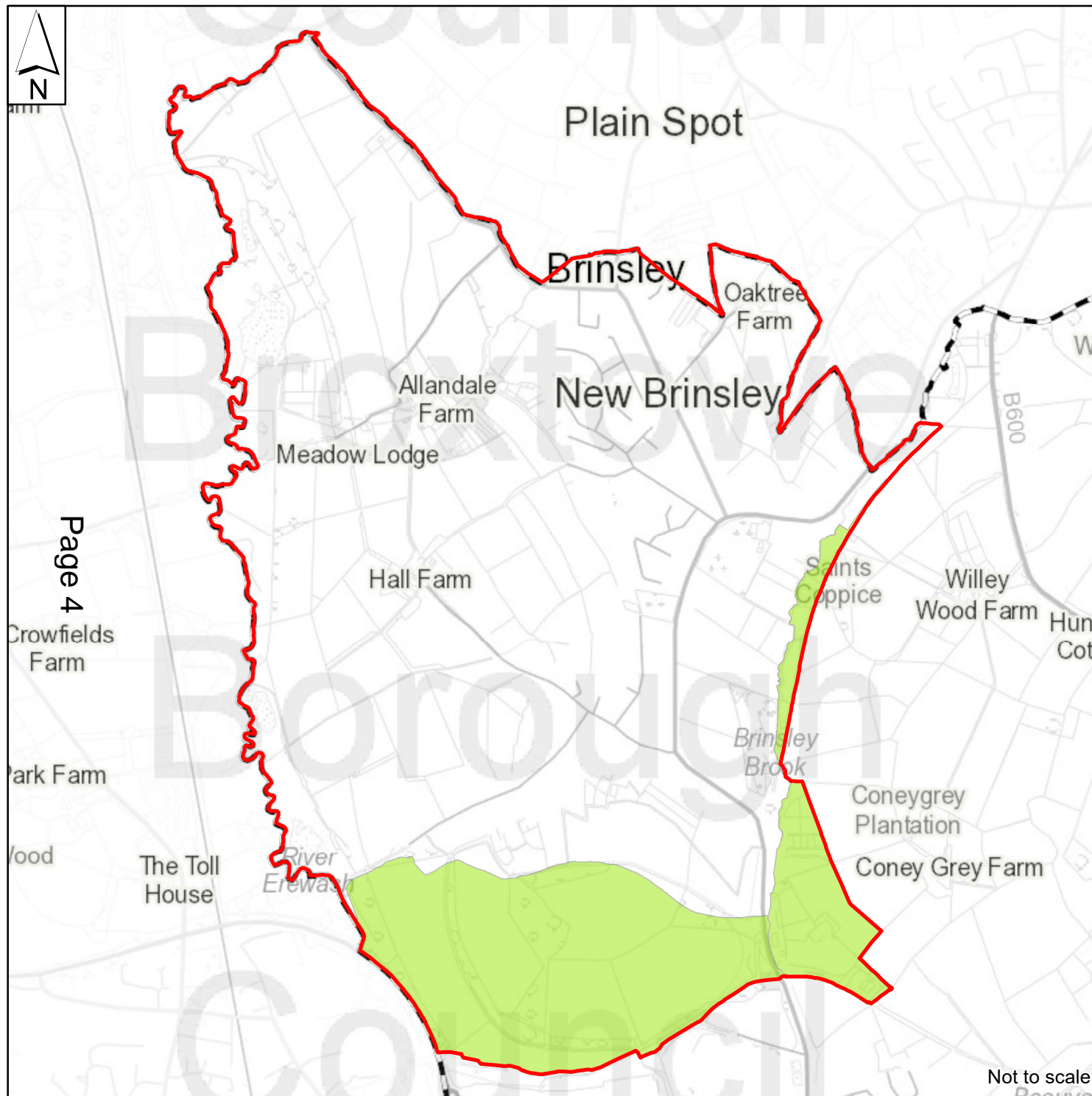
- Added
- Removed
- Potential Parish





Brinsley

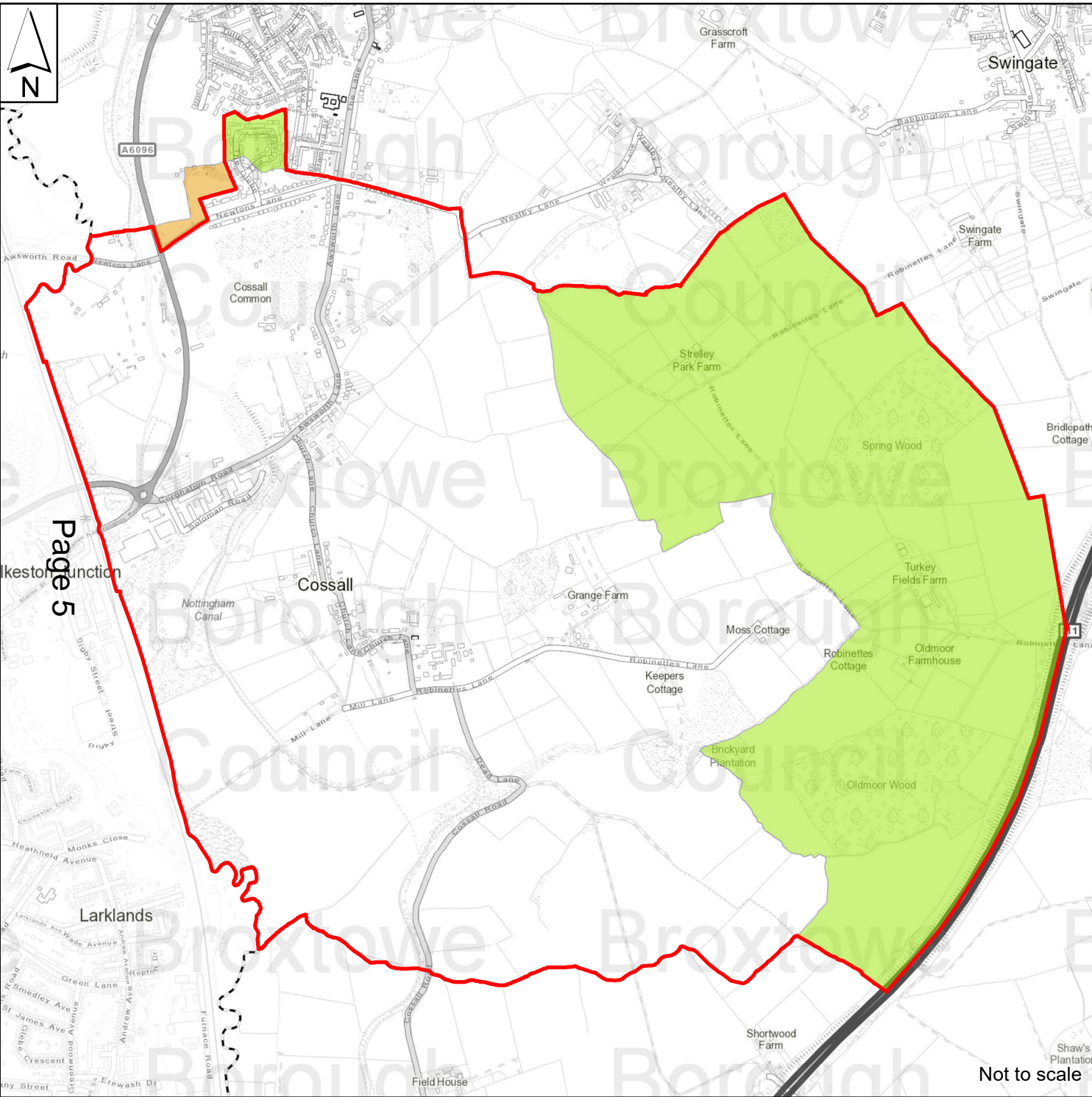
Draft Recommendations



Not to scale



Broxtowe
Borough
COUNCIL



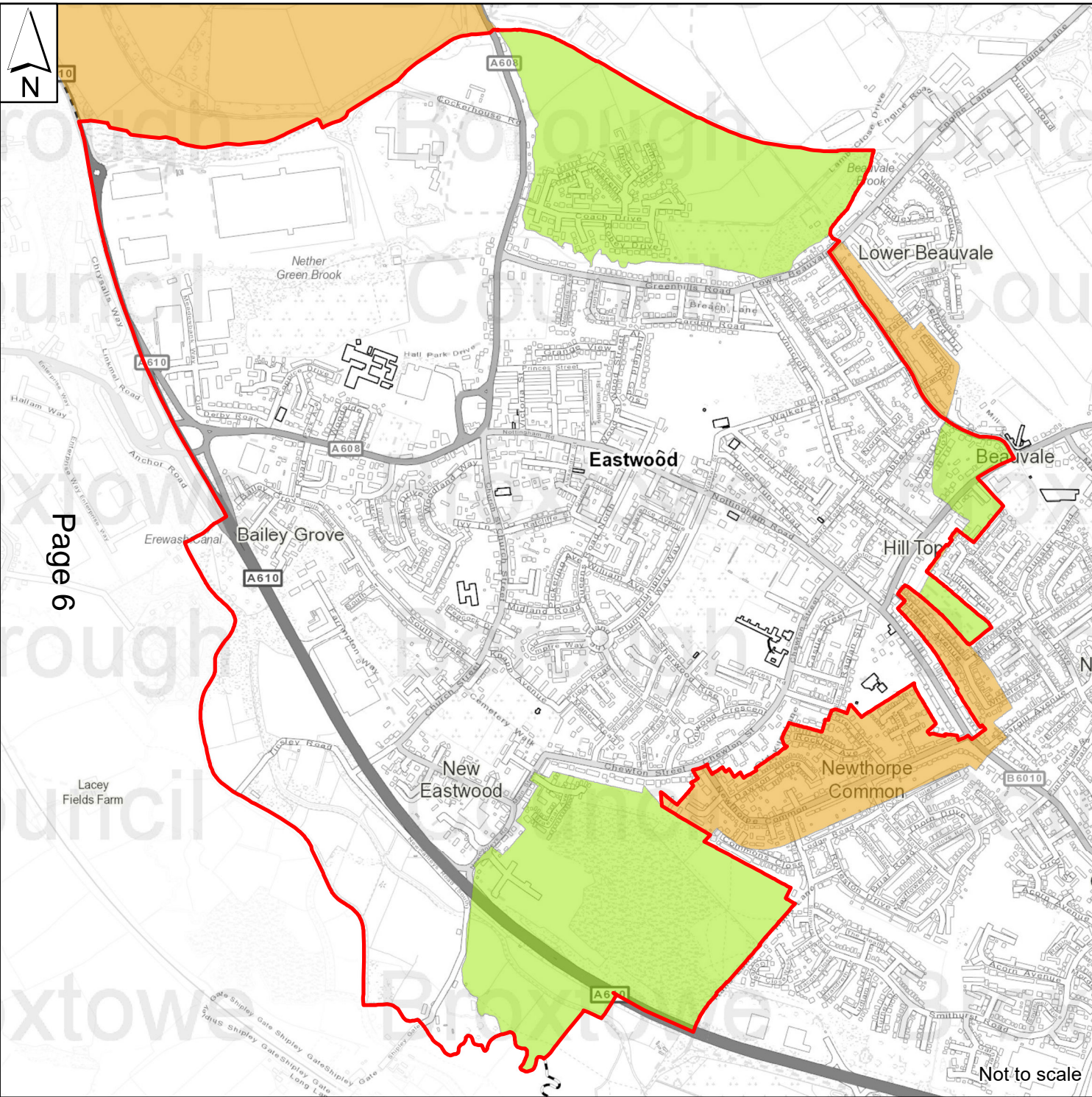
Cossall

Draft Recommendations

- Added
- Removed
- Potential Parish



Not to scale



Eastwood

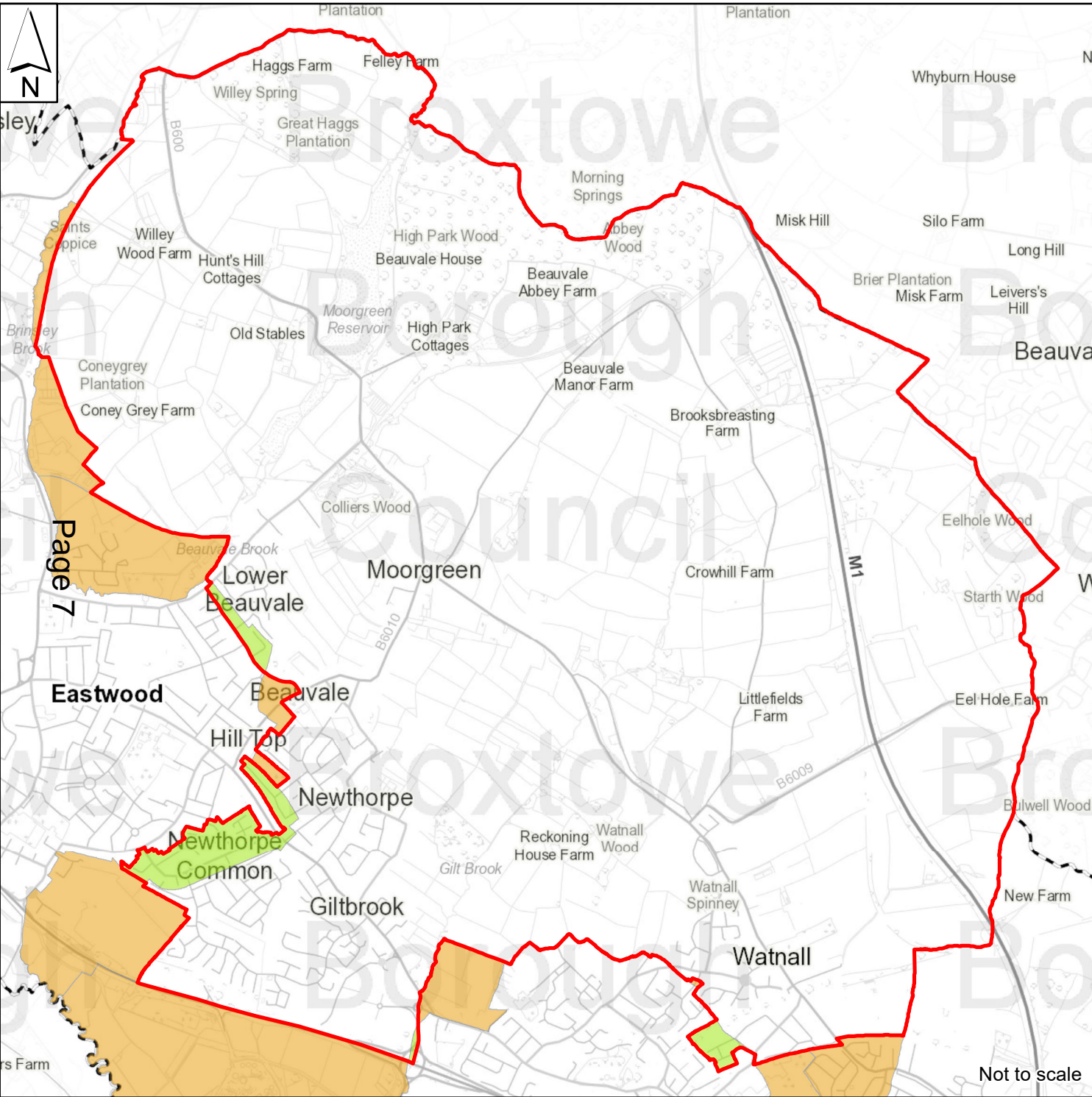
Draft
Recommendations

- Added
- Removed
- Potential Parish



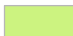


Broxtowe
Borough
COUNCIL

Not to scale



Greasley

**Draft
Recommendations**

-  Added
-  Removed
-  Potential Parish



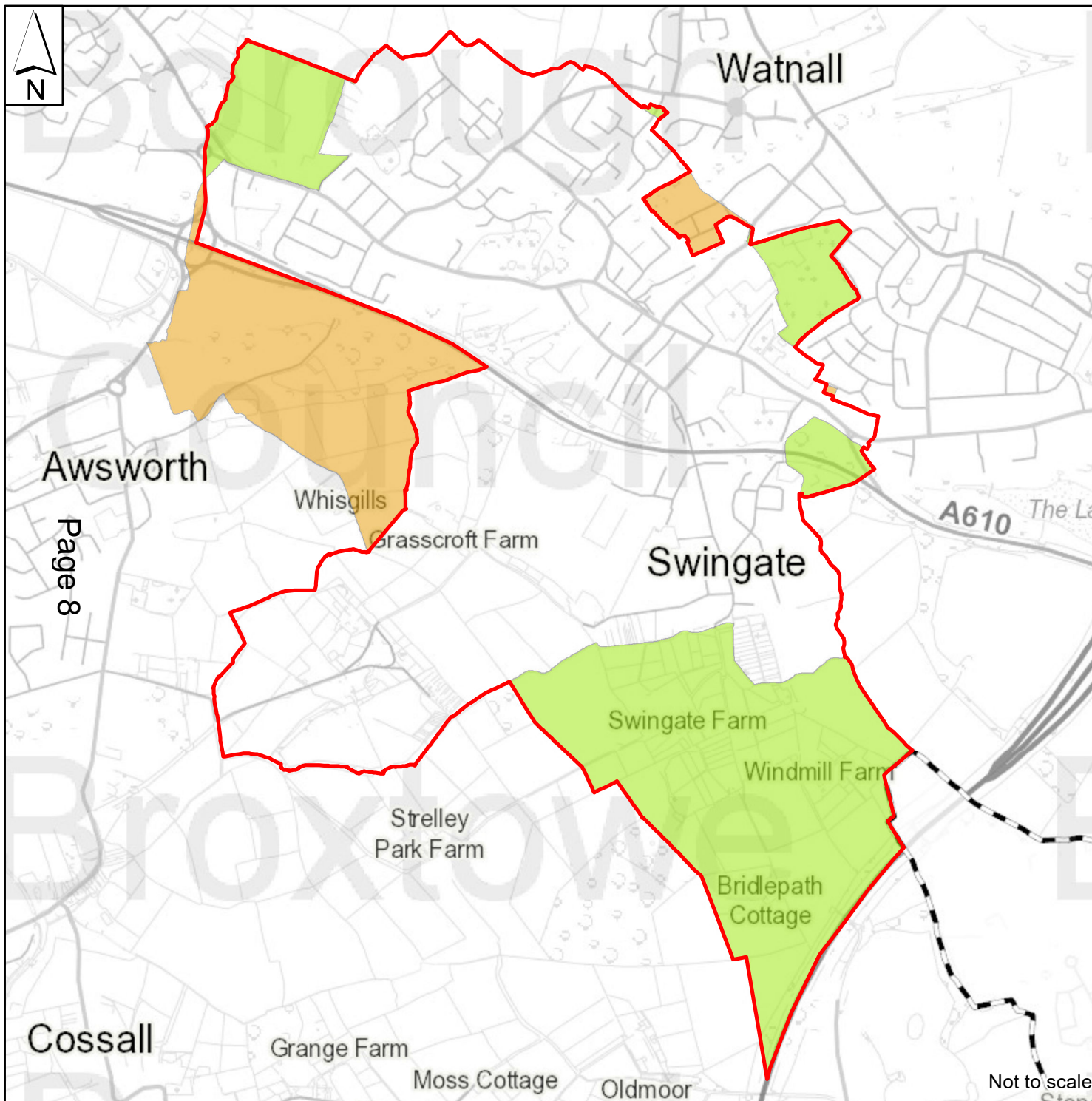
**Broxtowe
Borough
COUNCIL**

Not to scale



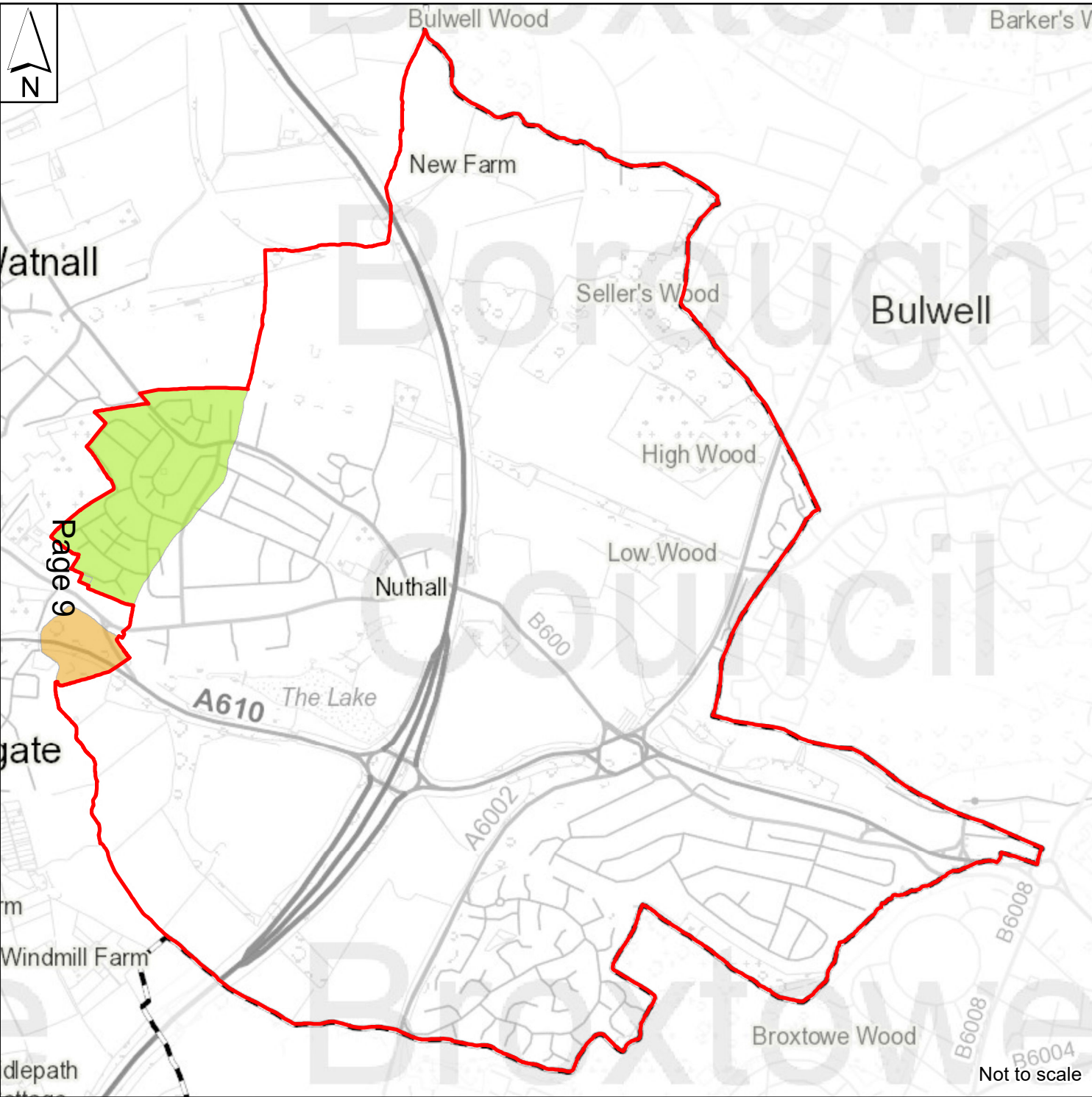
Kimberley

Draft Recommendations



- Added
- Removed
- Potential Parish





Nuthall

**Draft
Recommendations**

- Added
- Removed
- Potential Parish





Swancar
Farm

Stapleford

Bramcote Hill


A6007

Crow
Hill

Burnt Hill

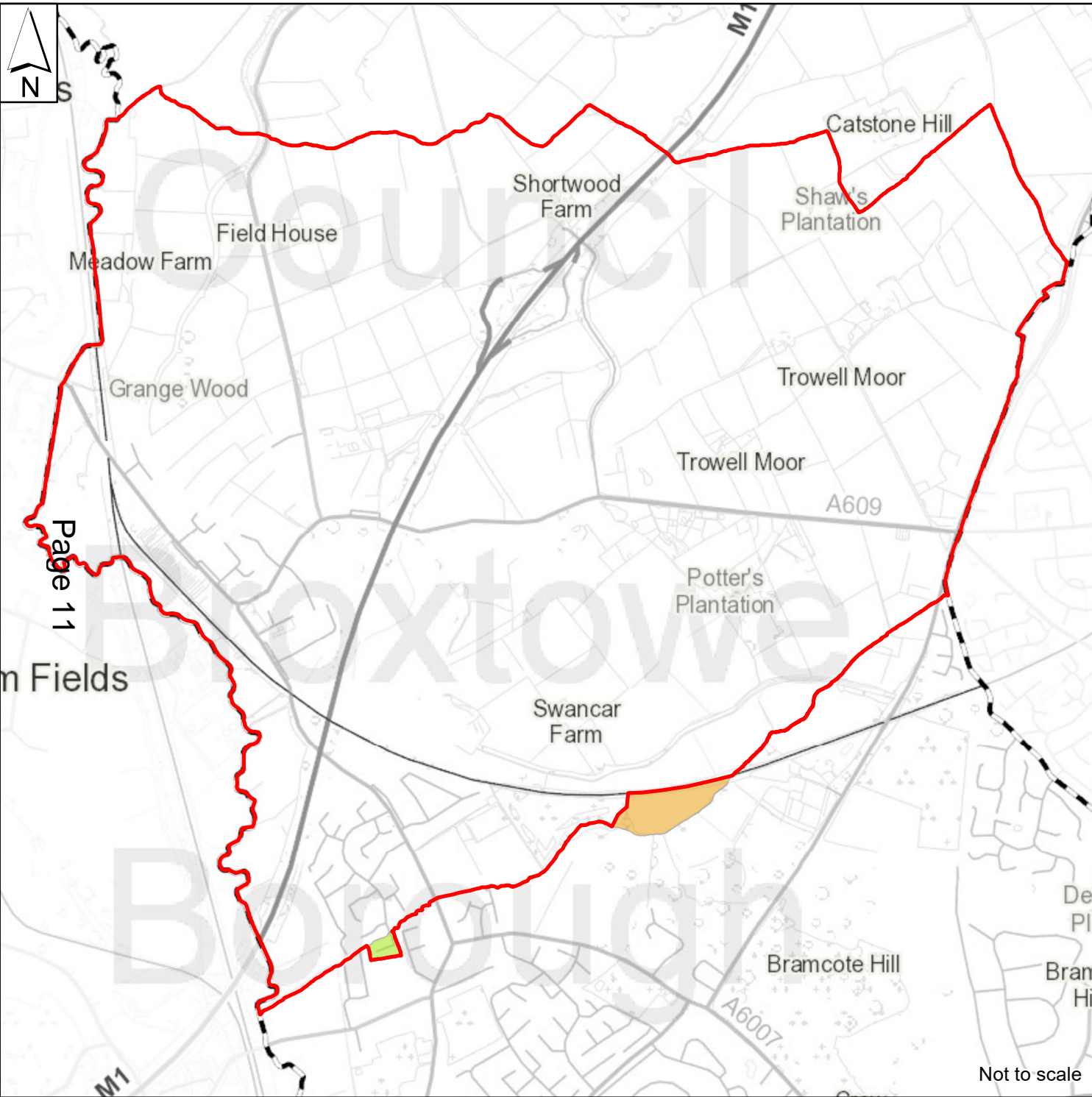
Stapleford

Sandiacre

-  Added
-  Removed
-  Potential Parish



Not to scale



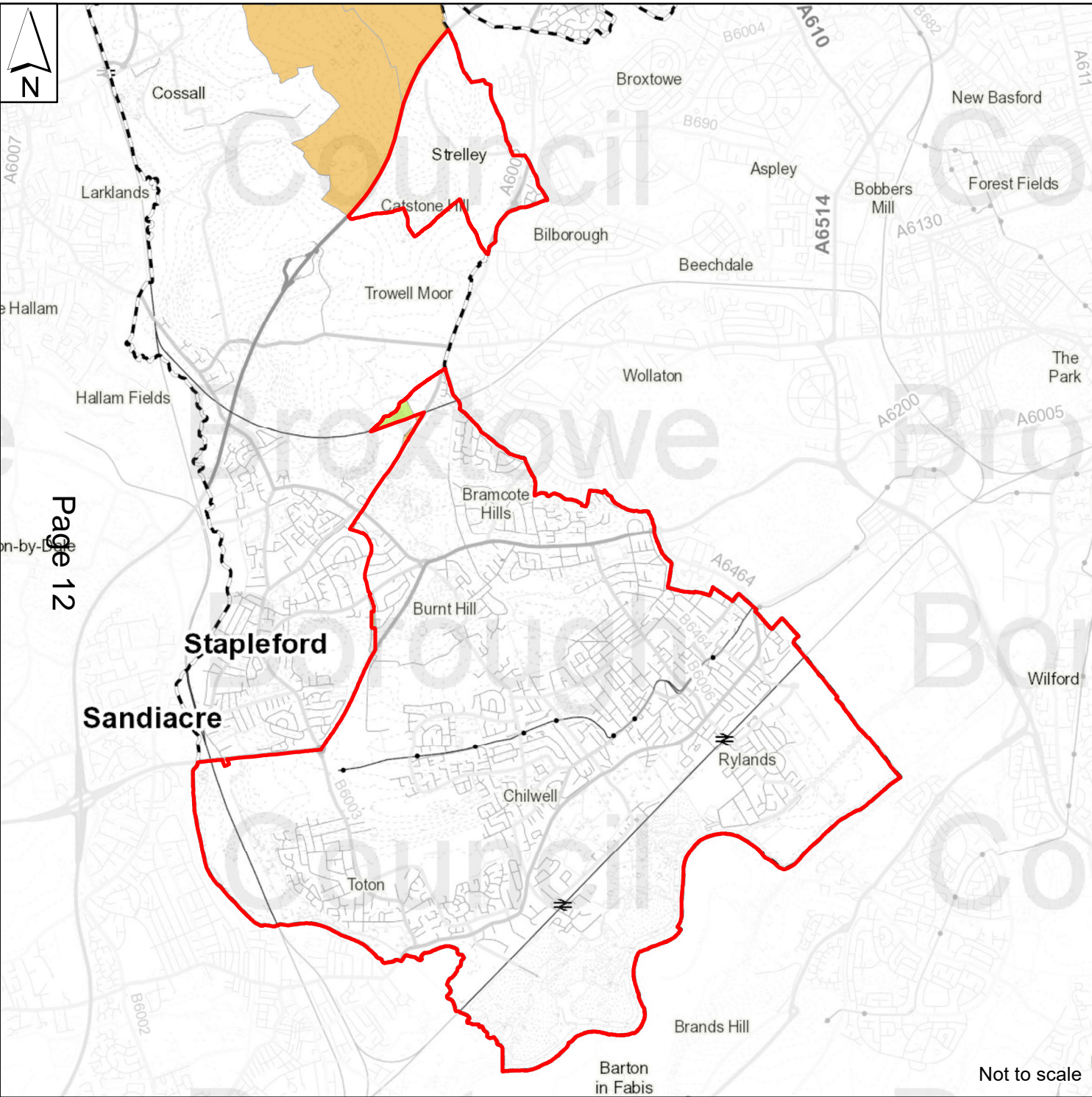
Trowell

**Draft
Recommendations**

- Added
- Removed
- Potential Parish

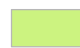




Not to scale



Unparished

**Draft
Recommendations**

-  Added
-  Removed
-  Potential Parish



Not to scale